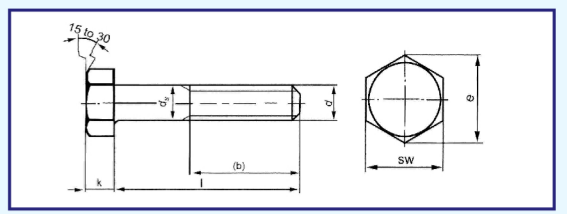


HEXAGON HEAD BOLTS FINE THREADED
ALTİKÖŞE BAŞLI İNCE DİŞLİ CİVATALAR
SECHSKANTSCHRAUBEN MIT FEINGEWİNDE



Technical informations. / Teknik bilgiler.

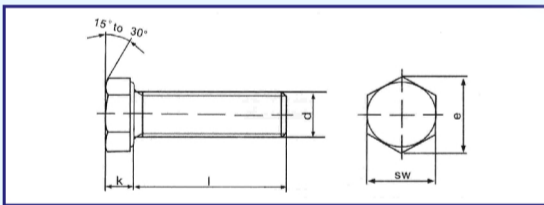
Thread size / Anma çapı		M8	M10	M12	M14	M16	M18	M20	M22	M24				
Pitch / Diş adımı	P	1.00	1.25	1.00	1.50	1.25	1.50	1.50	2.00	1.50	2.00	1.50	2.00	1.50
Wire dia / Tel çapı	min.	7.78	9.78	11.73	13.73	15.73	17.73	19.67	21.67	23.67				
Head heigh / Kafa yüksekliği	k	5.3	6.4	7.5	8.8	10	11.5	12.5	14	15				
	+/-	0.15	0.18	0.18	0.18	0.18	0.22	0.22	0.22	0.22				
Head with/Anahtar a	sw	13	16	17	18	19	21	22	24	27	30	32	34	36
Diagonal / Köşegen	e	14.38	17.77	18.90	20.03	21.10	23.35	24.49	26.75	30.14	33.53	35.72	37.72	39.98
Thread length / Diş uzunluğu	b ¹	22	26	30	34	38	42	46	50	54				
	b ²	28	32	36	40	44	48	52	56	60				

b¹ : Thread length for bolts up to 125mm. / 125mm. Boya kadar olan civatalar için diş boyu.

b² : Thread length for bolts between 125mm. & 200mm. / 125mm & 200mm. Boylar arasındaki civatalar için diş boyu.

Values are given in millimeters. / Değerler milimetre olarak verilmiştir.

Thread size / Anma çapı		M8	M10	M12	M14	M16	M18	M20	M22	M24
Length / Boy		Mass for 1.000 units in kg. / 1.000 Tanesinin ağırlığı.								
35	+/- 0.50	19.1								
40	+/- 0.50	21.1	36.3							
45	+/- 0.50	23.0	39.4	55.2						
50	+/- 0.50	25.0	42.5	59.6	84.5					
55	+/- 0.60	27.0	45.5	64.0	90.1	119				
60	+/- 0.60	28.9	48.6	68.4	95.7	127	169			
65	+/- 0.60	30.9	51.7	72.8	101	135	179	228		
70	+/- 0.60	32.9	54.7	77.2	107	143	189	240	293	
75	+/- 0.60	34.8	57.8	81.6	112	151	199	253	308	382
80	+/- 0.60	36.8	60.9	86.0	118	159	209	265	323	410
85	+/- 0.70	38.8	63.9	90.4	123	167	219	277	338	428
90	+/- 0.70	40.7	68.0	94.8	129	175	229	290	353	445
95	+/- 0.70	42.7	71.1	99.2	134	183	239	302	368	463
100	+/- 0.70	44.7	74.2	104	140	191	249	314	383	481
110	+/- 0.70		80.3	113	152	217	269	339	413	517
120	+/- 0.70		86.4	122	164	233	289	363	443	552
130	+/- 0.80		92.5	131	176	249	308	387	473	588
140	+/- 0.80		98.6	140	188	265	328	412	502	623
150	+/- 0.80		105	149	200	281	348	437	532	659
160	+/- 0.80			158	212	296	368	461	562	694
170	+/- 0.80			167	224	312	388	486	592	730
180	+/- 0.80			176	236	328	408	510	621	765
190	+/- 0.90				248	344	428	535	651	800
200	+/- 0.90				260	360	448	560	681	836



HEXAGON HEAD BOLTS FINE THREADED UP TO HEAD
ALTİKÖŞE BAŞLI İNCE TAM DİŞLİ CİVATALAR
SECHSKANTSCHRAUBEN MIT FEIN GEWINDE BIS KOPF

Technical informations. / Teknik bilgiler.

Thread size / Anma çapı		M8	M10	M12	M14	M16	M18	M20	M22	M24
Pitch / Diş adımı	P	1.00	1.00	1.25	1.50	1.50	1.50	1.50	2.00	1.50
Head heigh / Kafa yüksekliği	k	5.3	6.4	7.5	8.8	10	11.5	12.5	14.0	15.0
	+/-	0.15	0.18	0.18	0.18	0.18	0.22	0.22	0.22	0.22
Head with/Anahtar a	sw	13	17	19	21	24	27	30	32	36
Diagonal / Köşegen	e	14.38	18.90	21.10	24.49	26.75	30.14	33.53	35.72	39.98

Values are given in millimeters. / Değerler milimetre olarak verilmiştir.

Thread size / Anma çapı		M8	M10	M12	M14	M16	M18	M20	M22	M24
Length / Boy (1)		Mass for 1.000 units in kg. / 1.000 Tanesinin ağırlığı.								
20	+/- 0.42	12.4	23.5	32.9	48.7	64.5	90.0	118	146	189
25	+/- 0.42	14.1	26.2	36.6	54.0	71.5	98.5	128	158	205
30	+/- 0.42	15.7	28.9	40.3	59.1	78.5	107	139	172	221
35	+/- 0.50	17.4	31.6	44.0	64.4	85.3	116	151	185	238
40	+/- 0.50	19.1	34.3	47.7	69.6	92.3	124	162	198	254
45	+/- 0.50	20.7	36.9	51.4	74.9	99.0	133	172	212	270
50	+/- 0.50	22.3	39.6	55.0	80.2	106	142	184	226	287
55	+/- 0.60	24.0	42.3	58.7	85.4	113	151	195	240	303
60	+/- 0.60	25.7	45.1	62.4	90.6	120	160	207	253	319
70	+/- 0.60	29.0	50.5	70.0	101	134	177	228	280	352
80	+/- 0.60	32.3	55.8	77.4	111	148	195	251	307	384
90	+/- 0.70	35.7	61.2	84.8	122	162	212	272	335	415
100	+/- 0.70	38.9	66.7	92.2	133	176	229	295	361	448
110	+/- 0.70	42.4	72.2	99.2	144	190	247	317	388	481
120	+/- 0.70	45.9	77.5	107	154	204	265	339	415	513